

Tree Inventory
For Single Residential Development
 119 Ashley St.
 Bellingham, WA 98225



Aubrey Stargell
 PN6860A

Prepared by Aubrey J. Stargell
 Forester, Certified Arborist PN 6860A
 TRAQ



July 19, 2024

THESE PLANS HAVE BEEN PREPARED FOR BELLINGHAM LUXURY HOMES. USE OF ANY PART OF THE PLANS BY ANY OTHER PARTY OTHER THAN SLUSHER, EXCEPT ON BEHALF OF BELLINGHAM LUXURY HOMES, IS STRICTLY PROHIBITED. THE PLANS MAY NOT BE REPRODUCED OR TRANSMITTED IN ANY FORM OR BY ANY MEANS WITHOUT WRITTEN PERMISSION FROM SLUSHER LUXURY HOMES, WHICH RETAINS OWNERSHIP OF THE PLANS.

SLUSHER
 LUXURY HOMES

MITIGATION SITE PLAN
 119 ASHLEY ST.
 NEW 2,111 SF SINGLE FAMILY RESIDENCE
 W/4-BDRM, 4-BATH, 2-CAR GARAGE

ADDRESS:
 119 ASHLEY ST.
 BELLINGHAM WA 98229

ASSESSOR'S PARCEL:
 380 332 025 095 0000

LEGAL DESCRIPTION:
 JAMESON'S 2ND BAY
 VIEW ADD TO FAIRHAVEN
 LOTS 14-15-16 BLK 2

OWNER(S):
 RKS DEVELOPMENT, INC.
 512 40th St.
 BELLINGHAM WA 98229

DRAWN BY:
 TRENT SLUSHER
 OCTOBER 31st, 2024

SHEET
A5

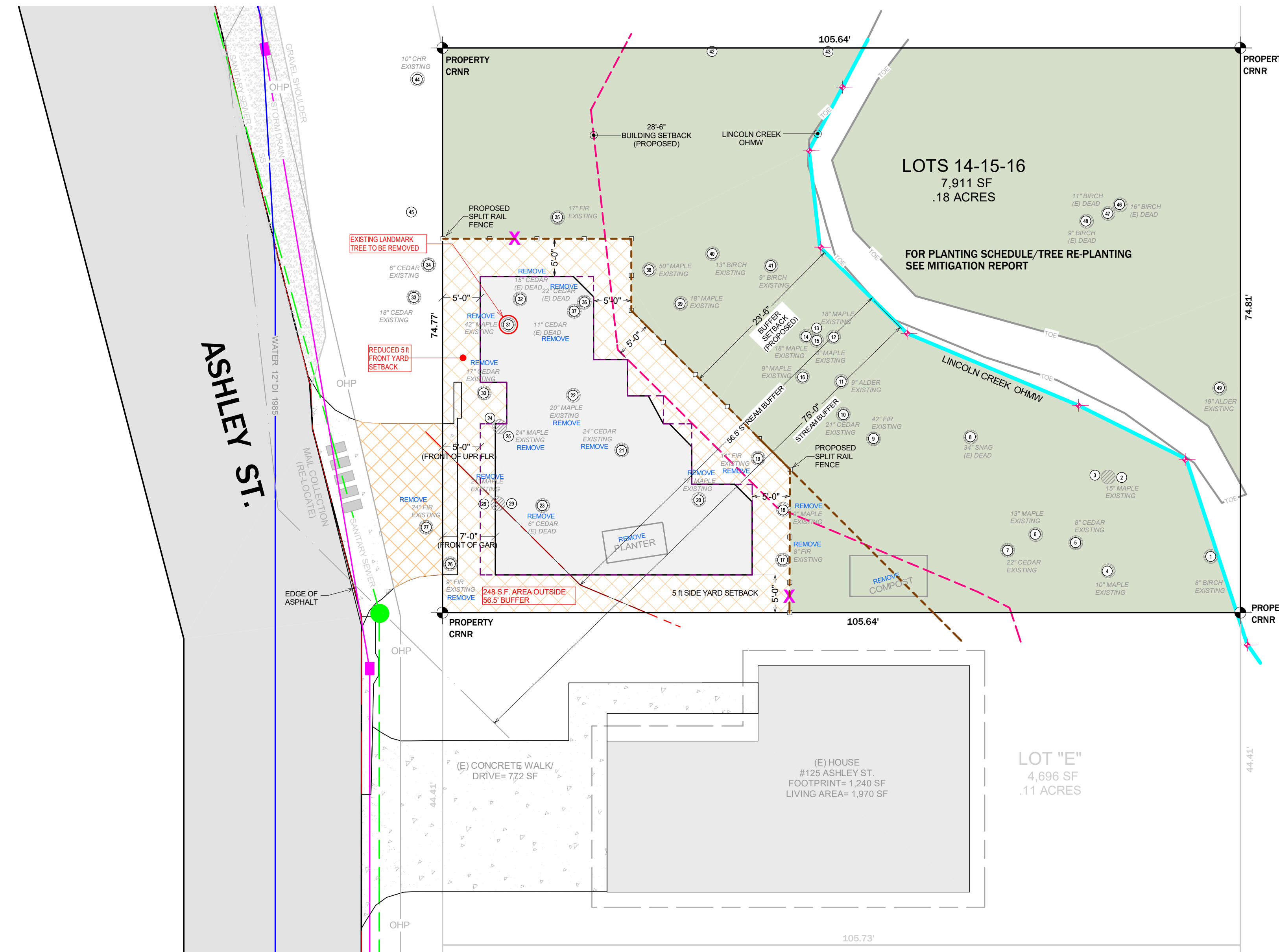


Table 1 below provides an inventory of existing site trees 6"+ dbh.

Tree #	Species	Dbh	Condition/Comments
1	Paper birch	8"	Poor condition. Hard lean E over Lincoln Cr. Vertical seam widecay SW face.
2	Bigleaf maple	8"	Fair condition. Somewhat suppressed but good form.
3	Bigleaf maple	8"	Fair condition. Somewhat suppressed but good form.
4	Bigleaf maple	11"	Good condition. Good crown, pistol butt NE, mild sweep, oval trunk.
5	W. red cedar	9"	Poor condition. Multi hard trunk bends at base, supp, crown hvy to S.
6	Bigleaf maple	15"	Good condition. Little supp, crown okay unbal hvy to E.
7	W. red cedar	24"	Fair condition. Broken out top at 40', crown okay below.
8	Bigleaf maple	18"	Dead. 25' snag with high decay.
9	Douglas fir	42"	Good condition. Good crown.
10	W. red cedar	22"	Good condition. Good crown/form
11	Red alder	10"	Poor condition. Suppressed, hard trunk kink at 12'.
12	Bigleaf maple	21"	Fair condition. Crown vigorous but cavity widecay W face trunk at 70'.
13	Bigleaf maple	9"	Fair condition. Crown fair but trunk has hard arch NE.
14	Bigleaf maple	19"	Good condition. Good crown/form, few dead secondary limbs.
15	Bigleaf maple	9"	Fair condition. Fair crown, good form, but cavity widecay W face at 8'.
16	Bigleaf maple	19"	Fair condition. Good crown/form but minor decay N base.
17	Douglas fir	9"	Good condition. Vigorous crown but hvy to S, fast taper.
18	Bigleaf maple	3.5, 5.0"	Poor condition. Vigorous crown but basal decay, poor branch arch., 4 trunks.
19	Douglas fir	12"	Good condition. Good crown/form but fast taper.
20	Bigleaf maple	18"	Poor condition. K. deusta basal decay w/cavity, crown still vigorous.
21	W. red cedar	28"	Poor condition. Nearly dead, top 30' dead.
22	Bigleaf maple	20"	Good condition. Good crown/form.
23	W. red cedar	6"	Dead. 15' snag.
24	Bigleaf maple	11"	Poor condition. Vertical scar W base up to 7', weak/spindly crown.
25	Bigleaf maple	13"	Fair condition. Weak/spindly top hvy to W.
26	Douglas fir	10"	Good condition. Good vigor but crown hvy to S, fast taper.
27	Douglas fir	14"	Fair condition. Trunk kink 30' up, some suppressed. In city r.o.w.?
28	Bigleaf maple	12"	Fair condition. Good vigor but poor branch architecture, some suppressed.
29	Bigleaf maple	9"	Poor condition. Top broken out at 15' widecay but still live.
30	W. red cedar	20"	Poor condition. Near dead, few live branches lower crown.
31	Bigleaf maple	15, 18, 21"	Poor condition. 18' 70' snag, 15' hard lean N, weak crown, 21' fair crown.
32	W. red cedar	18"	Dead. 70' snag.
33	W. red cedar	25'x17"	Poor condition. Double leaders both topped 25', crown vigorous below City.o.w.?
34	W. red cedar	7"	Poor condition. Top 6' dead, only 25' tall. In city r.o.w.?
35	Douglas fir	21"	Good condition. Good crown, sinuous trunk.
36	W. red cedar	11"	Dead. 35' snag.
37	W. red cedar	26"	Dead. 65' snag.
38	Bigleaf maple	15, 40"	Poor condition. 15' is 80' snag, 40' divides 2 at 7', K. deusta, W trunk 90' snag.
39	Bigleaf maple	14"	Fair condition. Good crown/form but cavity S base.
40	Cherry	6', 8'	Fair condition. DBL trunks, vigorous crowns but arching hard to N, NE.
41	Cherry	11"	Good condition. Vigorous crown but little suppressed, mod. lean NE.
42	Cherry	20"	Good condition. DBL trunk, good vigor, mild gummosis W base, near/over N line.
43	Bigleaf maple	11"	Good condition. Little suppressed but good crown/form near/over N prop. line?
44	Cherry	11"	Good condition. Good crown/form. In city r.o.w.?
45	Cherry	6"	Good condition. Good crown/form. In city r.o.w.?
46	Paper birch	21"	Dead/65' snag. Hard lean NE. High decay. E of creek.
47	Paper birch	13"	Dead. 30' snag. High decay. E. of creek.
48	Paper birch	10"	Dead. 8' snag. High decay. E. of creek.
49	Red alder	22"	Poor condition. Main trunk snapped off at 15', two 5' trunklets remain green.
49 total trees 6"+ dbh			

**PROPOSED NEW SINGLE FAMILY
 RESIDENCE WITHIN STREAM BUFFER**

The entirety of the subject parcel is within a 75 ft. stream buffer. The development envelope would occupy **2,043 square feet of stream buffer area** including all structures, concrete surfacing, and the small areas of maintained landscaping around and in front of the home. Impacts to stream buffer functions and values are anticipated to be permanent. To mitigate unavoidable buffer impacts, the proposal includes **enhancement of 5,514 square feet** of area surrounding the residence through conifer underplanting with some shrubs and removal of ivy. Minor impacts to water quality functions are expected to be offset through stormwater controls and site enhancement plantings, including native trees, shrubs, and groundcover, which would filtration and year-round water quality improvement functions over the existing site condition. All mitigation plantings would be maintained and monitored for a period of five years. A split-rail fence with native growth protection signage would be installed along the boundary of the mitigation, and all retained critical areas (both enhancement area and retained native area) would be placed in a permanent conservation easement recorded with the Whatcom County auditor's office.

MITIGATION PLAN
 GRAPHIC SCALE: 1"= 10'-0"

- BUFFER IMPACT (2,043 S.F.)
- BUILDING SETBACK (28.5 FT. MIN.)
- LINCOLN CREEK OHMW
- DEVELOPMENT FOOTPRINT (931 S.F.)
- BUFFER ENHANCEMENT (5,514 S.F.)
- NGPA SIGN
- SPLIT-RAIL FENCING